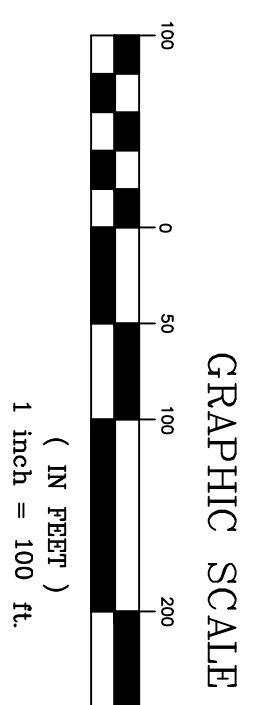


**SUNRISE RIDGE SUBDIVISION**  
 A PORTION OF THE SOUTHEAST QUARTER OF SECTION 8,  
 TOWNSHIP 1 NORTH, RANGE 5 EAST, S.L.B.&M., WANSHIP,  
 SUMMIT COUNTY, UTAH  
 SHEET 2 OF 2



**EASEMENT LEGEND**

- DRIVEAWAY EASEMENT & PUBLIC UTILITY EASEMENT
- ELECTRIC EASEMENT
- GAS EASEMENT
- WATER LINE, TANK EASEMENT AND P.U.E.
- PUBLIC UTILITY EASEMENT (PUE)

**LOT LINE TABLE**

LINE	LENGTH	BEARING
L1	39.83	S89°54'15"E
L2	51.36	S04°22'11"E
L3	56.51	S39°04'54"E
L4	19.67	S1°40'21"E
L5	33.07	S81°06'26"E
L6	33.07	S81°06'26"E
L7	56.51	S39°04'54"E
L8	51.36	S04°22'11"E
L10	36.68	S89°54'15"E

**LOT CURVE TABLE**

CURVE	LENGTH	RADIUS	DELTA	CHORD	BEARING
LC1	107.68	130.00	47°27'32"	104.63	N46°10'29"W
LC2	56.79	180.00	18°04'32"	56.95	N13°24'27"W
LC3	54.53	90.00	34°24'43"	53.70	S23°43'32"E
LC4	67.76	150.00	27°24'32"	63.07	N59°22'38"W
LC5	21.68	25.00	86°30'47"	21.00	N43°30'18"E
LC6	46.50	60.00	44°24'30"	45.35	S41°00'07"W
LC7	63.14	60.00	60°17'45"	60.27	N86°38'43"W
LC8	59.93	60.00	57°13'56"	57.47	N27°52'52"W
LC9	65.46	60.00	62°30'24"	62.26	N31°59'17"E
LC10	57.28	25.00	84°55'09"	53.03	N89°18'07"E
LC11	25.00	25.00	90°00'00"	25.00	N90°00'00"E
LC12	1.92	170.00	02°38'53"	1.92	S80°46'59"E
LC13	95.55	180.00	30°24'53"	94.43	N83°41'08"E
LC14	18.29	180.00	5°11'09"	16.29	N71°04'16"E
LC15	79.26	180.00	25°13'44"	78.62	N86°16'43"E
LC16	43.09	90.00	27°24'32"	42.64	N25°22'38"W
LC17	37.86	120.00	18°24'33"	37.70	N12°13'32"E
LC18	37.86	120.00	18°24'33"	37.70	N12°13'32"E
LC20	57.98	70.00	47°27'32"	56.34	N46°10'29"W

**ROAD Q CURVE TABLE**

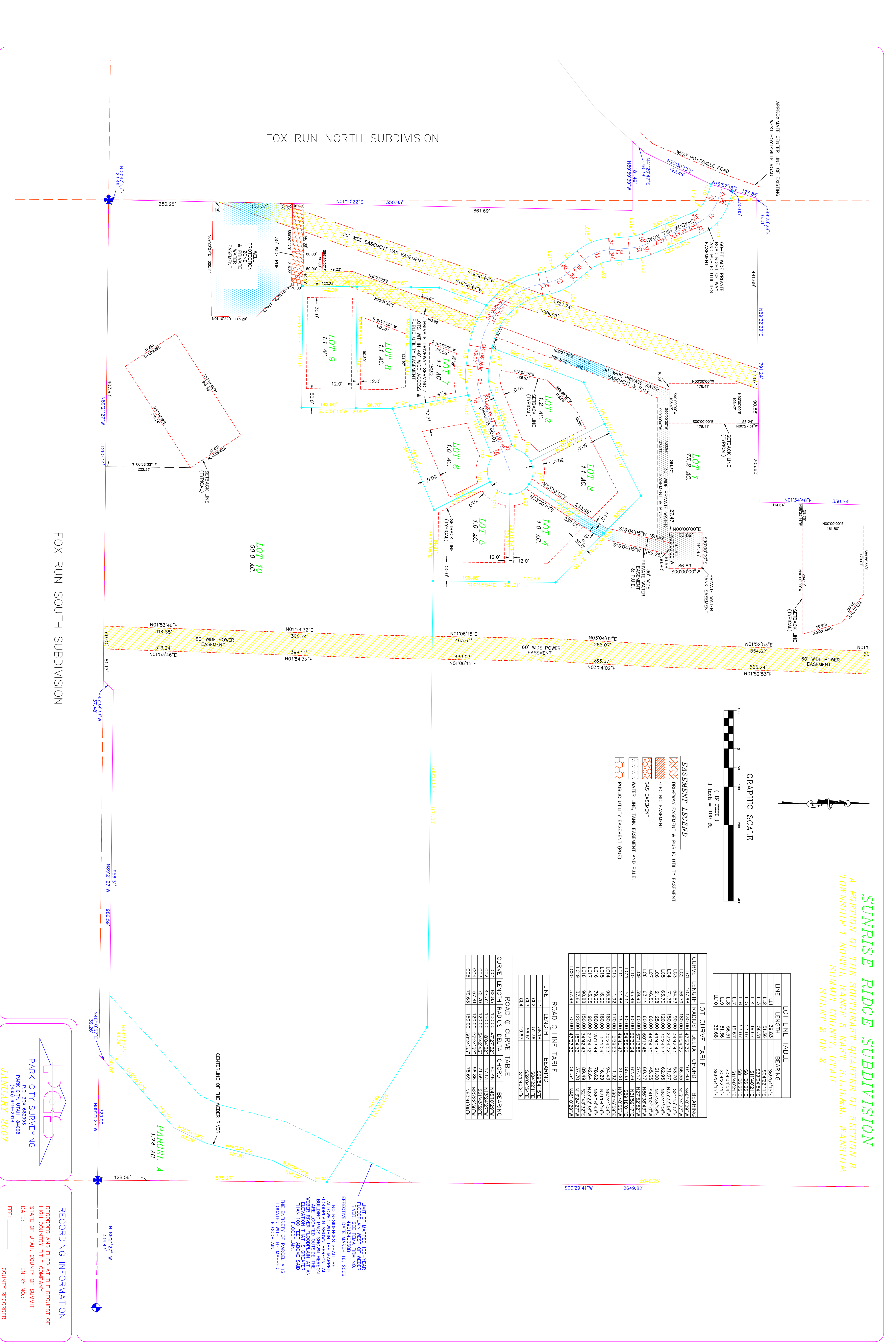
LINE	LENGTH	BEARING
Q1	38.18	S89°34'15"E
Q2	51.36	S04°22'11"E
Q3	56.51	S39°04'54"E
Q4	19.67	S1°40'21"E

**ROAD Q CURVE TABLE**

CURVE	LENGTH	RADIUS	DELTA	CHORD	BEARING
CG1	82.81	100.00	47°27'32"	80.48	N46°10'29"W
CG2	47.32	150.00	18°04'32"	47.13	N13°24'27"W
CG3	72.70	120.00	34°24'43"	71.59	S23°43'32"E
CG4	57.41	120.00	27°24'32"	56.86	N59°22'38"W
CG5	79.83	150.00	30°24'53"	78.89	N83°41'08"E

LIMIT OF MAPPED 100-YEAR FLOODPLAIN WEST OF WEBER RIVER. SEE FEMA FIRM NO. EFFECTIVE DATE MARCH 16, 2006  
 NO RESOURCES SHALL BE ALLOWED WITHIN THE MAPPED FLOODPLAIN SHOWN HEREON. ALL BUILDING PAOS SHOWN HEREON WEBER RIVER FLOODPLAIN AT AN ELEVATION THAT IS GREATER THAN 1140.00 DUNE SAND FLOODPLAIN.  
 THE ENTIRETY OF PARCEL A IS LOCATED WITHIN THE MAPPED FLOODPLAIN.

**FOX RUN NORTH SUBDIVISION**



**PARK CITY SURVEYING**  
 P.O. BOX 682933  
 PARK CITY, UTAH 84068  
 (435) 649-2918  
**JANUARY 2007**

**RECORDING INFORMATION**  
 RECORDED AND FILED AT THE REQUEST OF  
 HIGH COUNTRY TITLE COMPANY,  
 STATE OF UTAH, COUNTY OF SUMMIT  
 DATE: \_\_\_\_\_ ENTRY NO.: \_\_\_\_\_  
 FEE: \_\_\_\_\_ COUNTY RECORDER